



BS-2000 Modular System

Clinical Chemistry Solution

mindray
healthcare within reach

Mindray Clinical Chemistry Solution

High Throughput

2000 tests/hour
2200 tests/hour with ISE
Up to 8800 tests/hour for four modules
Flexible scalability

Advanced Software

Results traceability
Reflex function
Flexible STAT & rerun
Real-time status monitoring

Reliable Results

Advanced mechanical system
Complete reference system
Integral traceability system
International traceability certificate

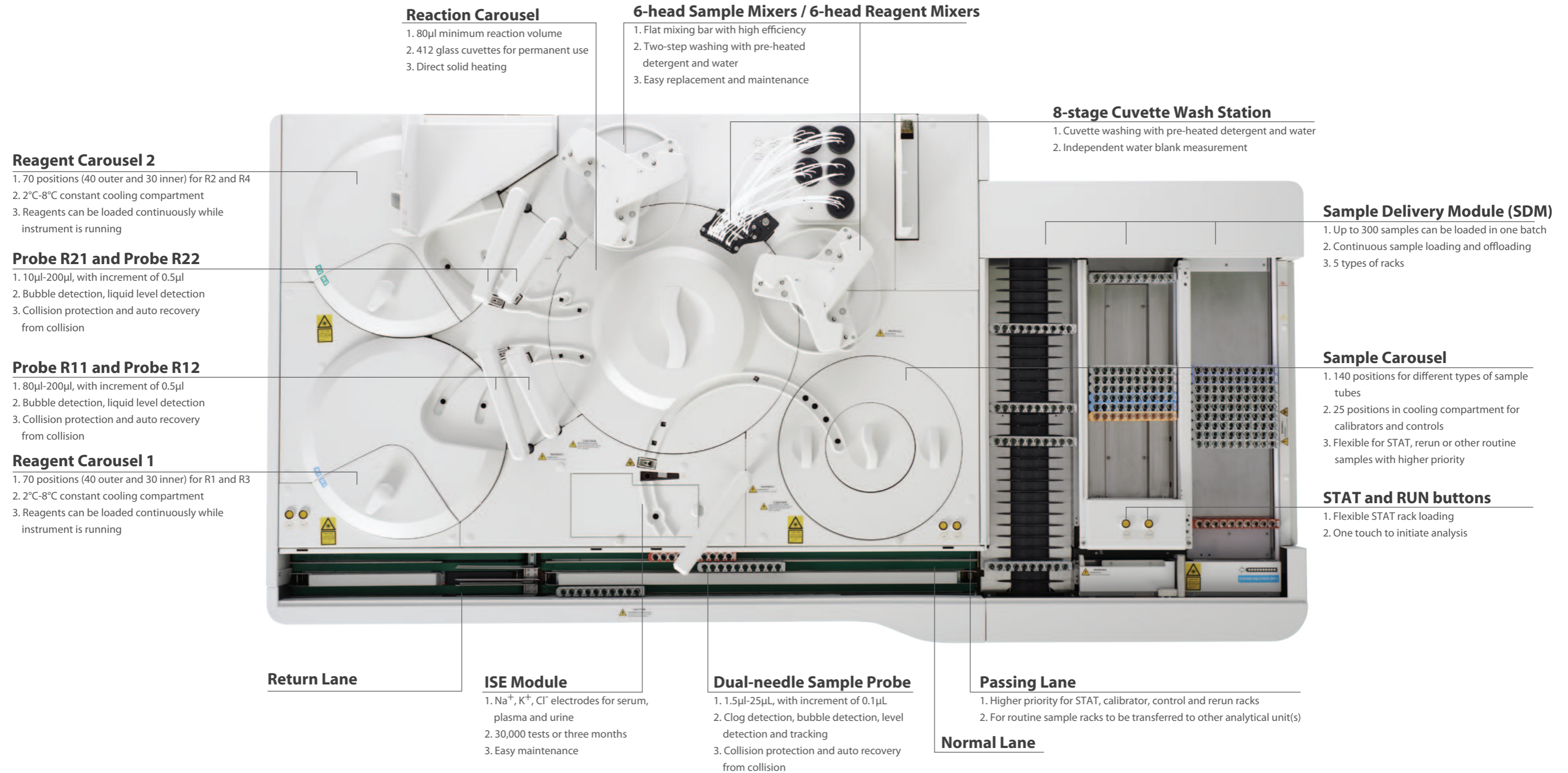
Dedicated Reagent System

Wide panel clinical chemistry assays
Original calibrators and controls
Reliable performance
ISO standard quality



BS-2000 Modular System

System Layout



Advanced Software



User-friendly Interface

- Unified platform for BS-2000 series, BS-800 series, BS-480 and future instrument
- Real-time status monitoring of analytical unit, SDM and carousels



Real-time QC Status Monitoring

- Westgard Rules and Two-Control Evaluation check
- Levey-Jennings chart and Twin-Plot chart for review
- Real-time alarm and locating when QC result(s) is out of range
- Auto QC setup capability

Traceable Test Results

- Reagent, calibrator and control information can be recalled from archive history
- User-friendly, intuitive software design, easy to trace results



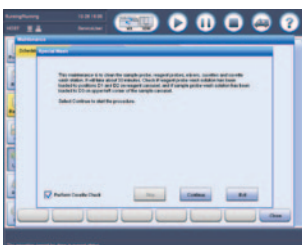
Reflex Function

- Pre-defined reflexive assays will be performed automatically when preset criteria is met
- Each assay may involve multiple reflexive criterias
- Each criteria may initiate up to a maximum of 20 relevant assays



Test Summary

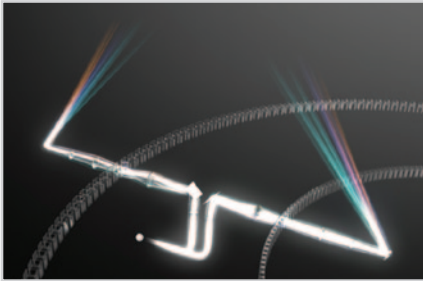
- Test summary during certain period, including calibration, QC, sample, valid tests and rerun tests
- Facilitate to computation of total test costs within a defined period
- The summary can be archived into excel files or printed to review and backup



Step-by-step Maintenance Guide

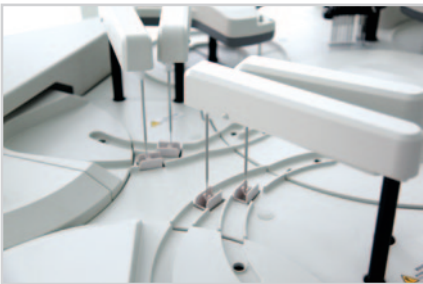
- Scheduled maintenance and maintenance guide for chemistries and ISE
- Ensure performance reliability and reduce unnecessary service calls
- Error report transferrable to service engineers for immediate troubleshooting; minimize instrument downtime

Reliable Results



Enhanced Optical System

- Dual-optical system with same light source
- Dual-lens and dual-diaphragm technology
- 80 μ l minimum reaction volume



High Precision Aspirating

- 1.5 μ l-25 μ l, with increment of 0.1 μ l for sample probe
- Non-touch dispensing for sample
- 80 μ l-200 μ l, with increment of 0.5 μ l for R11 and R12 probes
- 10 μ l-200 μ l, with increment of 0.5 μ l for R21 and R22 probes

High Performance Reaction System

- Two 6-head mixing units for reagent and samples
- Direct solid heating for reaction carousel
- Glass cuvettes for permanent use



Efficient Washing System

- Interior & exterior probe washing with high pressure pre-heated water
- Programmable enhanced washing with detergent for reagent and sample probes
- 8-stage cuvette wash station, washing cuvettes with pre-heated detergent and water
- Two-step mixer washing with pre-heated detergent and water



Stable Cooling Compartment

- 2°C-8°C constant cooling compartment for reagents
- Constant cooling compartment for calibrators and controls in sample carousel



Accurate, Reliable Results

To ensure accuracy, reliability and correlation of diagnostic data, Mindray utilizes the International Standard in result reporting. To assure ease of report retrieving, Mindray establishes the Mindray Clinical Chemistry Measurement System for result traceability.



Standard reference system

- Adopt JCTLM reference system
- IFCC primary method for enzyme, ID/MS method for substrate
- NIST, IRMM reference materials



JCTLM, Joint Committee On Traceability In Laboratory Medicine

NIST, National Institute of Standards and Technology, USA

IRMM, Institute for Reference Materials and Measurements, EU

IFCC, International Federation of Clinical Chemistry and Laboratory Medicine

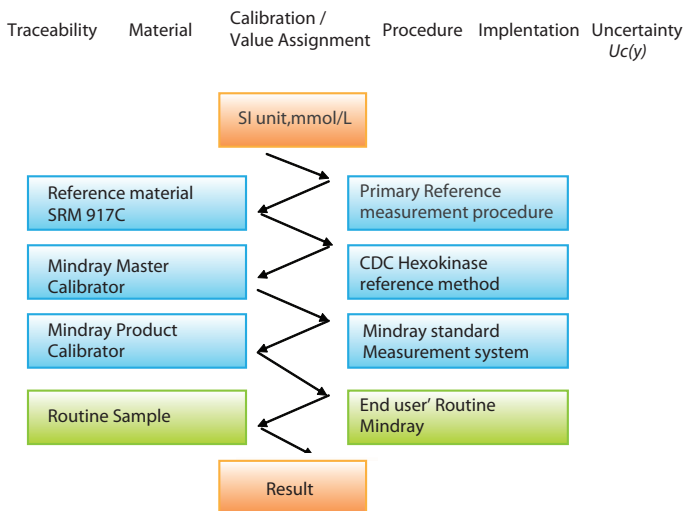
Complete traceability process

- Complete calibration hierarchy and traceability chain based on ISO standard (EN/ISO17511) from reference system to routine measurement system

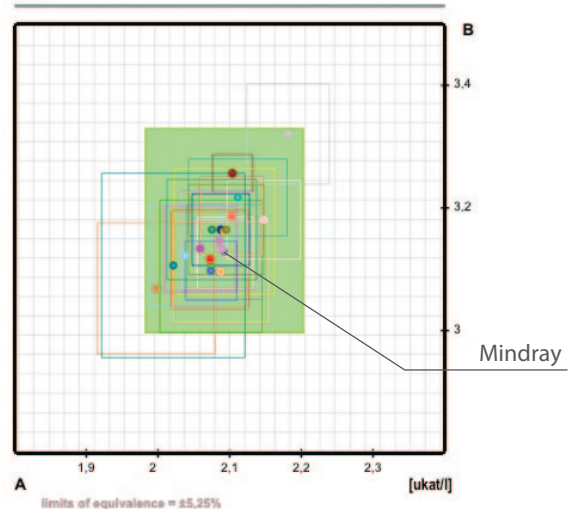
Proficiency testing for reference measurement

- Participate RELA (External quality control for reference laboratory) to verify the accuracy of the value assignment procedure.

Traceability chain of Mindray measurement system (Glu)



ALT



International standardization certification

- International Standardization certificates of Cholesterol and Hba1c from CRMLN and NGSP.

More information refers to website (<http://www.cdc.gov>).

CRMLN (Cholesterol Reference Method of Laboratory Network)

NGSP(National glycosylated hemoglobin standardization program)



Matched calibrators and controls

- Dedicated calibrators with traceability and specific target value
- Convenient design of multi items of calibrators and controls combined into one vial
- Long shelf life of lyophilized powder

Dedicated, high-quality reagents

- Diagnostic function test panels**

Test panels such as : Hepatic panel, renal panel, pancreatic panel, lipid panel, cardiac panel, diabetic panel, rheumatic factor panel

- Reliable analysis performance**

EP series standard (CLSI)-evaluate and optimize reagent system for reliable performance in precision, linearity, stability, specificity and anti-interference capability

- ISO standard manufacturing**

Mindray follow straightly the ISO Certified manufacturing process to ensure every lot of reagent in production are of supreme quality

Reagent Menu

Enzymes

Alanine Aminotransferase (ALT)
Aspartate Aminotransferase (AST)
Alkaline Phosphatase (ALP)
γ-Glutamyl Transferase (γ-GT)
α-Amylase (α-AMY)
Lactate Dehydrogenase (LDH)
Lipase (LIP)
Cholinesterase (CHE)
Adenosine deaminase (ADA)
α-L-fucosidase (AFU)
5'-nucleotidase (5'-NT)
Creatine Kinase (CK)
Creatine Kinase-MB (CK-MB)
α-Hydroxybutyrate Dehydrogenase (α-HBDH)
Glucose-6-phosphate dehydrogenase (G6PD) *
Angiotensin converting enzyme (ACE) *
D3-hydroxybutyric acid (D3-HB) *

Proteins

Immunoglobulin A (IgA)
Immunoglobulin G (IgG)
Immunoglobulin M (IgM)
Immunoglobulin E (IgE) *
Complement C3 (C3)
Complement C4 (C4)
C-Reactive Protein (CRP)
Lipoprotein(a) [LP(a)]
Prealbumin (PA)
High sensitivity C-reactive protein (hs-CRP)
Rheumatoid Factor (RF)
Antibodies Against Streptolysin O (ASO)
Homocysteine (HCY)
Ferritin (FER)
Transferrin (TRF)
Total iron binding capacity /
unsaturated iron Binding capacity (TIBC/UIBC)
Myoglobin*
D-dimer*
Retinol binding protein (RBP) *

* Coming soon

Substrates

Total Cholesterol (TC)
Triglycerides (TG)
HDL-Cholesterol (HDL-C)
LDL-Cholesterol (LDL-C)
Apolipoprotein A1 (ApoA1)
Apolipoprotein B (ApoB)
Direct Bilirubin (D-Bil) DSA
Direct Bilirubin (D-Bil) VOX
Total Bilirubin (T-Bil) DSA
Total Bilirubin (T-Bil) VOX
Total Protein (TP)
Albumin (ALB)
Total Bile Acids (TBA)
Glucose (Glu) GOD-POD
Glucose (Glu) HK
Urea (UREA)
Creatinine (CREA) Modified Jaffé
Creatinine (CREA) Enzymatic
Uric Acid (UA)
Carbon dioxide (CO2)
Fructosamine (FUN)
Hemoglobin A1c (HbA1c)
Cystatin C (CysC)
Microalbumin
β2-Microglobulin (β2-MG) *

Inorganic ions

Calcium (Ca)
Magnesium (Mg)
Phosphate Inorganic (P)
Iron (Fe)

Electrolytes/ISE

Chloride(Cl)
Potassium(K)
Sodium(Na)



Flexible Scalability



BS-2000 Modular System, the highest throughput chemistry system ever designed by Mindray, is a brand new solution package for hospitals and clinical laboratories with high sample volumes. It combines innovation and high performance into a fully integrated solution, together with the complete line of original reagents, calibrators with metrological traceability and controls. It offers customers a versatile solution with high efficiency, automation and scalability. Furthermore it will lay the foundation for further modular integration with Mindray's future products.



BS-2000 Modular System

Technical Specifications *

System function

Fully automated, discrete, random access, STAT sample priority
Throughput: 2000 tests/hour, up to 2200 tests/hour with ISE
Measuring Principles: Colorimetry, Turbidimetry and ISE method
Methodology: End-point, Fix-time, Kinetic, optional ISE

Sample Handling

Sample Carousel: 140 positions, 25 cooling positions or calibrators and controls
Sample Delivery Module (SDM): Up to 30 racks can be loaded simultaneously
Racks can be loaded continuously while instrument is running
Sample Racks: 10 samples/rack
Sample Probe: Liquid level detection, clot & bubble detection, horizontal and vertical collision protection
Sample Volume: 1.5µl-25µl, with increment of 0.1µl
Probe Washing: Interior and exterior probe washing
Programmable enhanced washing with detergent
Carry over < 0.1%
Automatic Sample Dilution: Pre-dilution,
post-dilution and auto-dilution for sample
Dilution ratio: 4~134
Barcode Reader: Integrated bar code scanner in SDM
Sample carousel barcode scanner (optional)

Reagent Handling

Reagent Carousel: 140 positions
Refrigerated compartment (2~8°C)
Reagent Bottle: Mindray 20ml and 62ml
Barcode Reader: Bar code scanner for two reagent carousels
Reagent Probe: Liquid level detection, clot & bubble detection, horizontal and vertical collision protection
Reagent Volume: 80µl-200µl, with increment of 0.5µl for R11 & R12 probes
10µl-200µl, with increment of 0.5µl for R21 & R22 probes
Probe Washing: Automatic interior and exterior probe washing
Programmable enhanced washing with detergent
Carry over < 0.1%
Reagent Loading: Reagent bottles can be loaded continuously while instrument is running

Reaction System

Reaction Carousel: 412 permanent glass cuvettes with 8-stage automatic washing
Cuvette: Optical length 5mm
Reaction Volume: 80µl-280µl
Reaction Temperature: 37°C ± 0.3°C with fluctuation of ± 0.1°C
Mixing Unit: Two 6-head highly polished mixing bar units for reagent mixing and sample mixing; two-step washing with pre-heated detergent and water

Optical System

Light Source: 12V/50W Halogen-tungsten lamp
Photometer: Holographic concave flat-field gratings
Wavelength: 13 wavelengths: 340nm~850nm
Absorption Range: 0~3.5A (10mm conversion)
Resolution: 0.0001Abs

ISE Module (Optional)

Indirect Method, Na⁺, K⁺, Cl⁻ tests, with 22µl sample volume

Operation Unit

Operation System: Window XP Professional or Windows 7 Professional (32bit)

Working Conditions

Power Supply: 110V/115V~, 60Hz; 220V-240V~, 50Hz; 220V/230V~, 60Hz
Input Power: 4500VA for each analytical unit, SDM: 800VA
Operating Temperature: 15°C~30°C
Relative Humidity: 35%RH~85%RH, without condensation
Water consumption: <85L/hour De-ionized water
Dimension: 1600mm(Length)×1050mm(Depth)×1300mm (Height)
for each analytical units, 710mm(Length)×1020mm(Depth)
×1000mm(Height) for SDM
Weight: ≤550Kg for each analytical unit, 150kg for SDM

*For single analytical unit



mindray

Mindray is listed on the NYSE under the symbol "MR"
Mindray Building, Keji 12th Road South, High-tech Industrial Park,
Nanshan, Shenzhen 518057, P.R. China
Tel: +86 755 8188 8998 Fax: +86 755 26582680
E-mail: intl-market@mindray.com Website: www.mindray.com

Blutgaskontrollen
Diagnostica
Durchflußzytometrie-
kontrollen
Hämatologiekontrollen
Hard- und Software
Industriebedarf
Kalibratoren

Kontrollseren
Kunststoffartikel
Laborbedarf
Laborgeräte
Mikrobiologie
Reagenzien
Referenzkontrollen
Schnelltests



<http://www.keul.de>

Günter Keul GmbH

Telefon 02551/2097
und 02551/2098
Telefax 02551/80883
E-Mail info@keul.de