



BC-2800Vet

Auto Hematology Analyzer



mindray
healthcare within reach

BC-2800Vet

Auto Hematology Analyzer



- CBC+DIFF for Cat, Dog, Horse, Mouse, Rat, Rabbit, Cow and Monkey;

Additional Eos% measurement for dog and cat.

- 13 pre-defined animal species + 3 programmable animals on request
- Fully automated, compact, flexible and low cost
- Throughput: 25 samples per hour
- Automatic sample probe cleaning
- Huge data storage of 10, 000 results with histograms

Multiple Animal Species

- 13 pre-defined programs(dog, cat, horse, mouse, rat, rabbit, pig, cow, buffalo, camel, sheep, monkey and goat) + 3 programmable animals on request

Convenient and Safe To Use

- Fully automatic
- Integrated self-cleaning system minimizes maintenance
- Cyanide free reagents avoid environmental risks

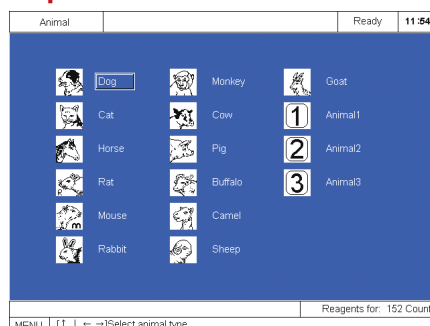
Superior Configuration

- Compact size requires small bench space
- Large color LCD display features intuitive communication
- Built-in thermal printer allows auto printing after every test

High Reliability and Accuracy

- Independent counting system for each species to ensure high accuracy
- Fully integrated calibration and quality control programs

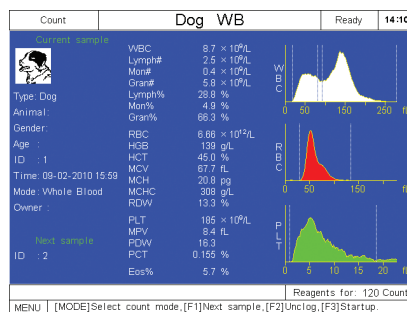
Operation Procedures



Step 1 Our Integrated list makes species selection easy



Step 2 Fully automatic aspiration and dilution procedures



Step 3 Results in less than three minutes; All parameters and histograms are visualized and printed



Step 4 Programmable multi-format printout

BC-2800Vet

Auto Hematology Analyzer

Technical Specifications:

Parameters

WBC, RBC, HGB, HCT, MCV, MCH, MCHC, RDW, PLT, MPV, PDW, PCT
Additional Parameters for Dog, Cat
Mouse, Rat, Rabbit, Cow and Monkey
Lymph#, Mon#, Gran#, Lymph%, Mon%, Gran%, Eos% (for dog and cat)
Histograms for WBC, RBC and PLT

Principles

Electrical impedance method for counting and cyanide free method for Hemoglobin

Sample Volume

Prediluted: 20 μ L
Whole Blood: 13 μ L

Throughput

25 samples per hour

Display

Color LCD display
Resolution: 640 x 480

Carryover

WBC, RBC, HGB \leq 0.5%, PLT \leq 1.0%

Input/Output

RS232 x 2, 1 parallel printer (optional), 1 barcode scanner (optional),
1 keyboard interface

Printout

Thermal recorder, 50mm width paper, multitude of printout formats,
printer optional

Operating Environment

Temperature: 15 $^{\circ}$ C~30 $^{\circ}$ C
Humidity: 30%~85%

Power Requirement

AC 100-240V, 50/60Hz

Dimension

322mm(W) x 437mm(H) x 386mm(D)

Weight

17.9 Kg



DISTRIBUTOR:

mindray