

DNA/RNA Extraction Kit

Genolution

*DNA/RNA Extraction
in Molecular Diagnostics & Genetic Research*



Genolution's DNA/RNA Extraction Kit

These Extraction Kits can be used in various area such as Molecular Diagnostics, Life Science and Genetic Research, etc.

The Kits are designed for Nextractor, 100% automated DNA/RNA extraction instrument, which guaranty perfect reproducibility and high throughput.

Product Information

Products	Package size	Specimen	Extraction
FFPE DNA Extraction Kit	48T	FFPE , Tissue	DNA
Whole blood DNA Extraction Kit	48T	Whole blood	DNA
Buccal Swab DNA Extraction Kit	48T	Buccal swab, Saliva	DNA
TB/NTM Extraction Kit	48T	Sputum, BrA, Pleural, CSF, Ascitic, BF etc.	DNA
STD Extraction Kit	48T/96T	Swab, Urine	DNA
HPV Extraction Kit	48T/96T	Cervical Swab	DNA
HBV Extraction Kit	48T/96T	Serum, Plasma	DNA
RV Extraction Kit	48T/96T	Nassal Swab, UTM	DNA/RNA
Rice DNA Extraction Kit	48T	Rice, Seed	DNA
Plant DNA Extraction Kit	48T	Plant	DNA
Cell RNA Extraction Kit	48T	Cell	RNA
Cell DNA Extraction Kit	48T	Cell	DNA

FFPE DNA Extraction Kit

FFPE DNA Extraction Kit offers the most efficient & easiest genomic DNA extraction from human organic FFPE (Formalin-Fixed, Paraffin-Embedded) samples i.e. breast, lung, colon, etc., assuring high purity & yield using Nextractor, automated nucleic acid extracting instrument.

Main Features

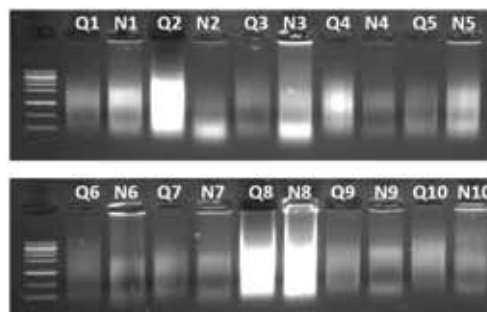
- Extraction of wide range from 1 sample to 48 samples at a time
 - Pre-filled cartridge provided
 - Quick removal of paraffin with mineral oil
 - Simple and easy to operate
- (Enjoy your time ! At least 30 minutes faster than competitors)

		Nextractor	P Company	Q Company
Time	Paraffin removal	5min	5min	20min
	Pre-lysis	1hr 30min	2hr	2hr
	Extraction	16min	25min	15min
	Total (8 samples)	1hr 51min	2hr 30min	2hr 35min
	Paraffin removal	Oil	Oil	Xylene
	Method	Magnetic bead	Column	Column
	System	Automatic	Manual	Manual

Experiment Results

(Experiment 1)

NO.	Nextractor		Q Company (column)	
	Conc. (ng/ul)	Ratio (260/280)	Conc. (ng/ul)	Ratio (260/280)
1	117.8	1.99	80.7	2.13
2	183.5	1.87	299.4	2.03
3	236.0	1.92	70.9	2.13
4	88.6	2.06	115.0	2.11
5	206.9	2.04	37.8	2.21
6	179.7	2.01	62.2	2.10
7	125.6	1.90	78.3	2.10
8	649.9	1.94	506.5	1.99
9	142.6	1.84	75.0	2.07
10	128.9	1.88	77.5	2.10



Condition of electrophoresis
 - 0.8% agarose gel
 - Ladder: 1kb
 - Loading sample: 10ul
 - Electrophoresis at 150V for 15min

(Experiment 2)

NO.	Sample	Nextractor		Q Company (column)	
		Conc. (ng/ul)	Ratio (260/280)	Conc. (ng/ul)	Ratio (260/280)
1	Lung p*	39.6	2.01	13.9	2.00
2	Stomach p	20.7	2.00	16.6	1.91
3	Rectum p	25.0	2.04	25.9	1.93
4	Large intestines p	20.4	1.72	14.4	1.85
5	Lung N**	17.4	1.88	11.8	1.76
6	Stomach N	23.6	1.92	23.1	1.94
7	Rectum N	23.6	1.81	26.2	1.86
8	Large intestines N	30.2	1.92	11.9	1.88

*p : patient sample

**N : Nomal sample

Buccal swab DNA Extraction Kit

Buccal swab DNA Extraction Kit is the most efficient & easiest genomic DNA extraction kit with high purity & yield from Swab sample using Nextractor, 100% automated nucleic extracting instrument.

Main Features

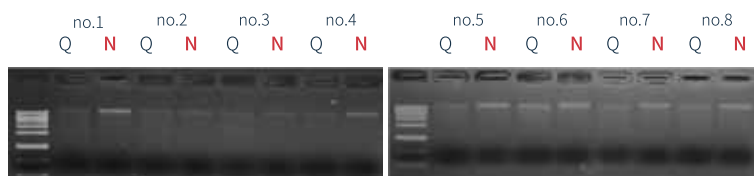
- Extraction possible from 1 sample up to as much as 48 samples at a time
- Pre-filled cartridge provided
- No pre-treatment required
- Best reproducibility through automated process
- Simple and easy to operate

	Genolution	Q Company
Main sample type	Buccal swab, saliva	Buccal swab
Sample amount	200 ul	200 ul
Elution volume	100 ul	100~150 ul
Method	Magnetic bead	Spin column
System	Automatic	Manual
Extraction time	15 min (1~48 samples)	40 min (about 8 samples)
Yield	Buccal swab 1~4ug Saliva 3~10ug	Buccal swab 0.5~1ug Saliva 1~5ug

Experiment Results

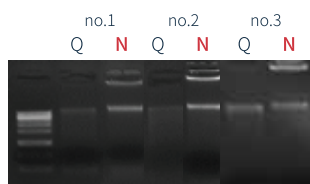
(Sample : Buccal swab)

NO.	Nexttractor			Q Company (column)		
	Conc. (ng/ul)	Purity (A260/A280)	Human actin Ct value	Conc. (ng/ul)	Purity (A260/A280)	Human actin Ct value
1	32.8	2.08	24.45	7.70	2.21	24.87
2	22.5	2.50	24.74	9.90	1.64	24.05
3	21.3	1.97	24.83	5.30	1.81	24.09
4	19.4	2.50	25.12	5.40	2.05	25.02
5	22.0	2.66	23.47	3.40	2.22	23.97
6	23.5	2.35	23.10	5.30	3.33	23.06
7	25.0	1.94	23.47	7.00	2.54	23.22
8	32.2	2.00	23.43	5.70	1.73	23.39



(Sample : Saliva)

NO.	Nexttractor			Q Company (column)		
	Conc. (ng/ul)	Purity (A260/A280)	Human actin Ct value	Conc. (ng/ul)	Purity (A260/A280)	Human actin Ct value
1	68.1	1.93	22.97	14.2	1.98	23.33
2	31.8	1.70	23.54	16.6	1.86	23.54
3	70.7	1.88	21.91	12.9	1.66	21.58



Whole Blood DNA Extraction Kit

Whole Blood DNA Extraction Kit offers you the most efficient & easiest way of genomic DNA extraction from whole blood sample with high purity & yield using Nextractor, 100% automated nucleic extracting instrument.

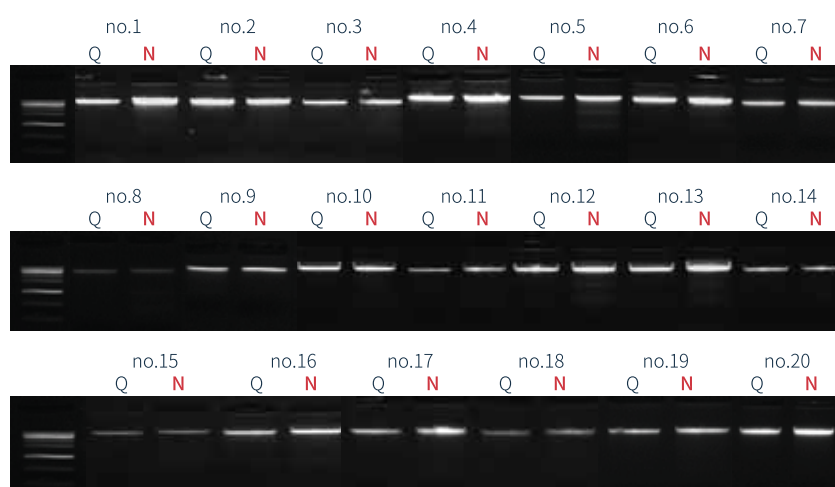
Main Features

- Extraction possible from 1 sample up to as much as 48 samples at a time
- Pre-filled cartridge provided
- No pre-treatment required
- Best reproducibility through automated process
- Simple and easy to operate

	Genolution	Q Company
Main sample type	Whole blood, Buffy coat	Whole blood, Body fluids
Sample amount	200 ul	200 ul
Elution volume	100 ul	50~200 ul
Method	Magnetic bead	Spin column
System	Automatic	manual
Extraction time	15 min (1~48 samples)	40 min (about 8 samples)
Yield	5 ~ 15 ug	3 ~ 10 ug

Experiment Results

NO.	Nextractor			Q Company (column)		
	Conc. (ng/ul)	Purity (A260/A280)	Human actin Ct value	Conc. (ng/ul)	Purity (A260/A280)	Human actin Ct value
1	135	1.76	19.02	46.3	1.84	19.19
2	122	1.75	19.39	106.0	1.57	19.05
3	74.6	1.95	20.09	28.8	1.81	20.52
4	69.3	1.95	19.23	36.0	1.81	19.86
5	78.2	1.96	19.50	28.9	1.96	20.35
6	75.5	2.15	19.44	46.9	1.73	19.43
7	69.3	1.89	20.18	27.4	1.81	20.29
8	52.4	2.06	21.28	24.5	1.55	21.47
9	50.3	1.97	20.24	23.5	1.89	20.52
10	102.0	1.78	19.41	45.8	2.00	19.83
11	103.0	1.83	19.96	27.6	1.87	20.52
12	131.0	1.92	18.75	57.4	1.91	19.40
13	138.0	1.90	18.79	56.7	2.07	19.31
14	75.5	1.94	20.17	36.2	1.97	20.32
15	53.3	2.08	21.38	21.5	1.65	21.60
16	81.6	1.76	19.68	61.3	1.54	20.42
17	96.2	1.87	19.49	31.0	1.94	20.30
18	66.1	1.88	20.84	18.4	1.61	21.31
19	68.0	2.00	20.30	23.1	1.82	20.77
20	108.0	1.95	19.11	33.4	1.98	20.14



Vertrieb Deutschland:



**Günter Keul
GmbH**

Telefon 02551/2097
und 02551/2098
Telefax 02551/80883
E-Mail info@keul.de
<http://www.keul.de>
Von-Langen-Weg 10
D-48565 Steinfurt

Change for the Future

Genolution



Br-KIT160720-R0