

ChromPure™ Syringe Filter

With high-quality Membrane



Unique design of gear rim



Non-pyrogenic



Easier to tell the filter membrane



Chrompure™ Syringe Filter

More perfect more efficient

MS ChromPure™ Syringe Filters are syringe-operated filters for the clarification of aqueous solutions (column eluates, tissue culture additives, HPLC samples, etc.). It is offered at a fair and competitive price. It is further to do the beautification appearance on general syringe filters basis and containing high quality membrane materials to make your experiment performance more perfect. Its unique design of gear edge, make the products more beautiful and innovative. The Classic range is available in all of the major membranes including Nylon, PTFE, PVDF, CA and PES, which are supplied in 13mm, 25mm formats in virgin medical polypropylene housings.

Features

Easy twist:

Gear rim ring for better handling

Color coding:

Easier to tell the filter membrane

Better membrane media:

Improved membrane flow rates

Application Compatibility:

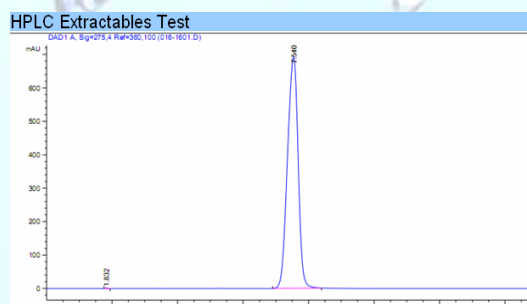
Broad range of filtration media meets diverse application needs and best for chromatography application

Sterile:

Filters can be purchased pre-sterilized by Gamma radiation and individually packaged

- HPLC certification which guarantees the filters will not produce extraneous peaks in the UV range.
- 100% integrity tested with higher burst strength ratings assuring they will perform consistently.
- Available in 13 and 25mm sizes and available in sterile, too.
- 0.45 μm for most clarification applications and 0.22 μm when fine particulate removal is required. Other pore size are available in 0.8 μm -5 μm .

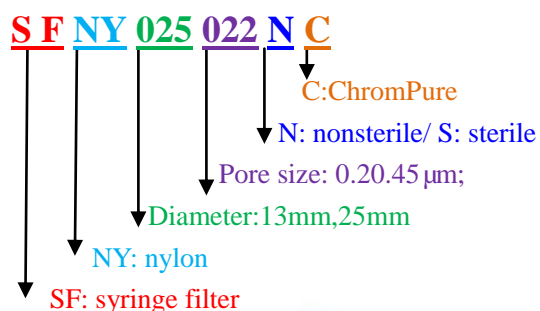
Validated HPLC Performance



Agilent Technologies 1200, Column: C18 UV = 254 nm
Mob.phase: MeOH/H₂O:20:80, Temperature: 25 °C, Flow rate: 0.8ml/min, sample: 2mg/ml Bergenin (in Methanol)

Ordering information:

A: How to order?



Application

- HPLC sample preparation
- Routine QC analysis
- Content uniformity
- Removal of protein precipitates
- Dissolution testing
- Food analysis
- Biofuel analysis
- Environmental samples

Technical specifications

Parameters	13mm	25mm
Effective Filtration Area(cm ²)	1.09	4.08
Maximum Pressure	87 psi (6.0 bar) at 20 °C	87psi (6.0 bar) at 20 °C
Maximum Operating Temperature	50°C	50°C
Materials of Construction	Housing: Polypropylene	Housing: Polypropylene
	Filtration Media: As specified	Filtration Media: As specified
Holdup volume (µl)	<25	<100
Sample volume (ml)	<10	<100
Connectors	Inlet: Female Luer Lock (FLL)	Inlet: Female Luer Lock (FLL)
	Outlet: Male Slip Luer (MSL)	Outlet: Male Slip Luer (MSL)
Flow Direction	Flow from inlet to outlet (FLL to MSL)	Flow from inlet to outlet (FLL to MSL)

Exclusive Distributors Wanted

Standard Sample Pack			
Nylon syringe filter (100pcs)		PTFE syringe filter (100pcs)	
	13mm, 0.22/0.45µm,		13mm, 0.22/0.45µm,
	25mm, 0.22/0.45µm,		25mm, 0.22/0.45µm,
PVDF syringe filter (100pcs)		PES syringe filter (100pcs)	
	13mm, 0.22/0.45µm,		13mm, 0.22/0.45µm,
	25mm, 0.22/0.45µm,		25mm, 0.22/0.45µm,
GF syringe filter (100pcs)		MCE syringe filter (100pcs)	
	13mm, 0.22/0.45µm,		13mm, 0.22/0.45µm,
	25mm, 0.22/0.45µm,		25mm, 0.22/0.45µm,

Ordering information

13mm

Catalogue No.	Membrane	pore size(μm)	Quantity/pack(pcs)
SFNY013022NC	nylon	0.22	100
SFNY013045NC	nylon	0.45	100
SFPTFE013022NBC	PTFE	0.22	100
SFPTFE013045NBC	PTFE	0.45	100
SFPTFE013022NLC	PTFE	0.22	100
SFPTFE013045NLC	PTFE	0.45	100
SFPVDF013022NC	PVDF	0.22	100
SFPVDF013045NC	PVDF	0.45	100
SFPES013022NC	PES	0.22	100
SFPES013045NC	PES	0.45	100
SFCA013022NC	CA	0.22	100
SFCA013045NC	CA	0.45	100
SFGF013022NC	GF	0.22	100
SFGF013045NC	GF	0.45	100
SFMCE013022NC	MCE	0.22	100
SFMCE013045NC	MCE	0.45	100

25mm

Catalogue No.	Membrane	pore size(μm)	Quantity/pack(pcs)
SFNY025022NC	Nylon	0.22	100
SFNY025045NC	Nylon	0.45	100
SFPTFE025022NBC	PTFE	0.22	100
SFPTFE025045NBC	PTFE	0.45	100
SFPTFE025022NLC	PTFE	0.22	100
SFPTFE025045NLC	PTFE	0.45	100
SFPVDF025022NC	PVDF	0.22	100
SFPVDF025045NC	PVDF	0.45	100
SFPES025022NC	PES	0.22	100
SFPES025045NC	PES	0.45	100
SFCA025022NC	CA	0.22	100
SFCA025045NC	CA	0.45	100
SFGF025022NC	GF	0.22	100
SFGF025045NC	GF	0.45	100
SFMCE025022NC	MCE	0.22	100
SFMCE025045NC	MCE	0.45	100

Note:

1. Special specifications are available like pore size: 0.1um, 1.0um, 3.0um, 5.0um. Various membrane medium with pp or glass fiber prefilter are available.
2. Sterile Syringe filters of all material are available.

